

Servowatch
Marine Automation & Integrated Ship Solutions

ALARM, MONITORING AND CONTROL SYSTEM (AMCS)

Innovation and Integration as Standard

Monitor • Control • Support • Protect • Survive

Servowatch - Reference Projects

ARCO DIJK



Type: Trailing Suction Hopper Dredger
Customer: Hanson Aggregates
Location: United Kingdom

MY MONACO



Type: Motor Yacht
Customer: Pendennis
Location: United Kingdom

VLIELAND



Type: Roll on Roll off Passenger Ship
Customer: Doeksen & Zonen
Location: Netherlands

LIDER



Type: Crew Carrier
Customer: FBMA / Lockheed Martin
Location: Philippines

HSV 2 SWIFT



Type: Logistics Naval Vessel
Customer: Incat
Location: Australia

SALAM 7



Type: Tug
Customer: Mapso/Suez Canal Authority
Location: Egypt

AMERICAN QUEEN



Type: Inland Passenger Ship
Customer: Bollinger Marine Fabricators
Location: USA

HERSTON LASS

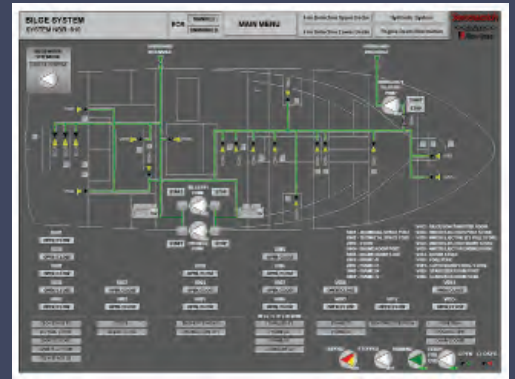


Type: Crew Boat
Customer: Smit
Location: United Kingdom

Servowatch - Alarm, Monitoring and Control System

As undeniable experts in the field of system integration, Servowatch now introduces the new generation package for ship alarm, monitoring and control system. Ranging from simple stand alone monitoring equipment to fully integrated system automation.

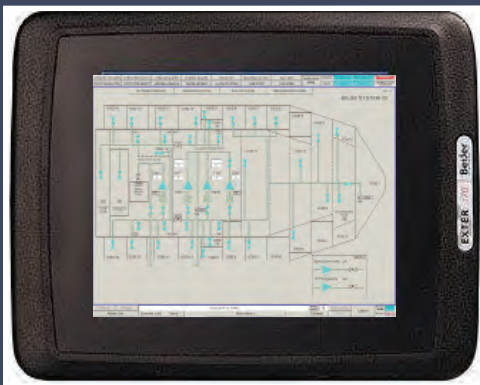
The Servowatch AMCS design technology allows for scalability, flexibility and simplified upgrade opportunities. Approved by all major Classification Societies, the system architecture can be applied to any type of vessel. With the capability to distribute all ship control data on dual redundant networks, the operator will be provided with the best information and decision support system available.



Bilge System Mimic



19" Workstation

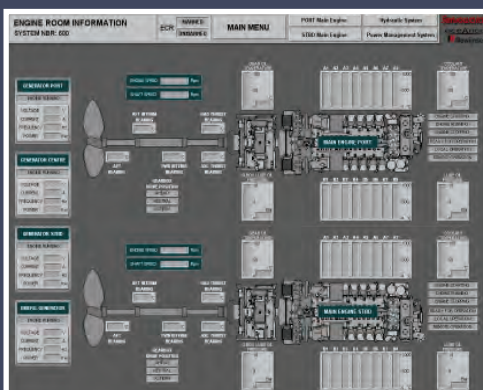


Local Operating Panel

Servowatch has been a world leading provider of marine alarm, monitoring and control system for more than 35 years, and this experience is invested within the product for the benefit of the customer.

Functionality and features available through Servowatch AMCS include:

- Local intelligent Data Acquisition Unit
- Multipoint Serial Communications Gateway
- Graphical Operator Workstation
- Local Operator Panels
- Group Alarm Panel
- UMS Duty Engineer Alarm Transfer System
- Engineer Patrol Safety System
- Data Logging and Trending Analysis



Engine Room Mimic

Servowatch – Award Winning Software

The Servowatch AMCS is a flexible system that utilises techniques developed over more than 35 years in the marine automation industry. Fully type approved commercial standard components are available to meet all levels of installation specification. Simplified programming techniques in a common development background lower engineering resource requirements, and enable user level maintenance without external intervention.

Data Collection & Control Devices may be configured to accept various I/O configurations, including serial inputs from other systems. Built in test functionality monitors performance to ensure full system capabilities are maintained. For increased survivability, networked control algorithms and a unique hot-swap capability is an available option.

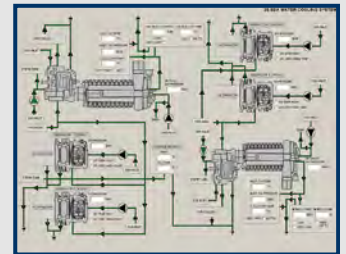
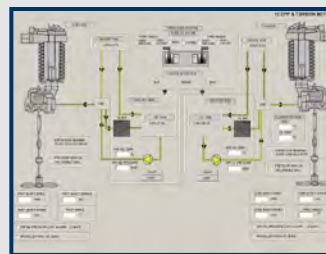
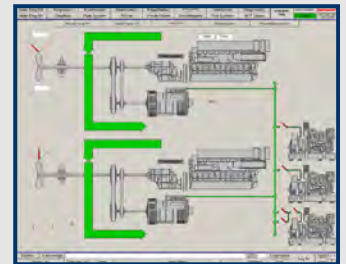
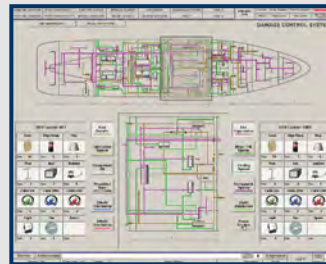
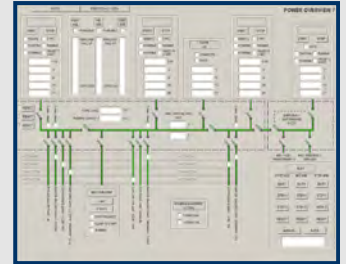
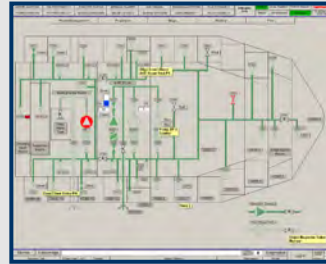
All alarm, monitoring and control information, regardless of the format required for integration, is processed and displayed on custom designed graphical mimics. The mimics depict all ship systems arrangements, for example: propulsion plant; electrical systems; auxiliary machinery; tank and pipeline arrangements, volumes, capacities; damage control; HVAC; aircraft fuel handling systems.

The workstations are configured for user profile and may include password protection, user identity recognition, or other security access systems. The user profile may be transported from station to station.

Advanced equipment health monitoring and dynamic analysis tools provide supporting information that assists with maintenance scheduling, operational safety limits, and condition reporting. The graphical package enables operators to train on systems mimic designs as actually installed in the ship for true realism.

WINMON - Lloyds Award for Software Innovation.

Information to the right place defines survival, safe operation, efficiency and ability to respond. WINMON is the tool that combines a tile layered graphic approach (TLG) for simplified information presentation. A user friendly interface for operation and maintenance places the package ahead of its rivals. Together with the flexibility to integrate third party software packages, the system develops into a comprehensive ship management tool.



Mimic Samples, including:

Bilge & Ballast System, Switchboard Control, Damage Control, Propulsion Overview, Lub Oil System, Fuel Oil System — within a common WINMON environment.

A Global Presence

For detail of our global representation please contact our head office:

Servowatch Systems Ltd

Endeavour House

Holloway Road

Heybridge, Maldon

Essex

CM9 4ER

United Kingdom

Tel: +44(0)1621 855562 Fax: +44(0)1621 851521

E-Mail: sales@servowatch.com Web: www.servowatch.com

Authorised Representative

