

**Servowatch**  
Marine Automation & Integrated Ship Solutions

# MARINE ELECTRICAL AND AUTOMATION TURNKEY SOLUTIONS

Innovation and Integration as Standard

Monitor • Control • Support • Protect • Survive

# Servowatch provides a turnkey electrical and automation capability

With headquarters in the UK, Servowatch is the centre for technical excellence within the Marine Business Unit of L & T, pulling together expertise from around the group.



## Design / Engineering / Project Management

The success of any project relies heavily on effective project management. Projects are assigned to one of our experienced project managers who will liaise with the customer from the design and planning stage through to commissioning, ensuring that the project runs smoothly and is delivered on time.

The highly trained and professional Servowatch team is able to offer an extensive range of services including:

- Project Management
- System Design, Manufacture & Integration
- Software Design & Development
- Service & Maintenance
- Training
- Commercial & Technical Consultancy



## Electrical Design & Switchgear

Servowatch offers a fully turnkey capability from design through to delivery and commissioning of electrical installations. Systems are designed and validated using the latest computer modelling tools. All Servowatch packages can be integrated into a single electrical solution to meet all shipyard needs, minimising the risk to technical delivery.



- Main Switchboards
- Feeder Section Switchboards
- Energy Distribution Centres
- Emergency Switchboards
- Control Panels
- Group Starter Panels
- Distribution Boards
- Direct Online Starters
- Manual/Auto Change Over Switches
- Auto Bus Transfer Switches
- Transformers
- DC Distribution Boards



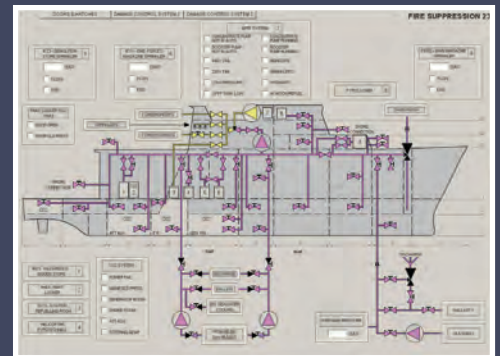
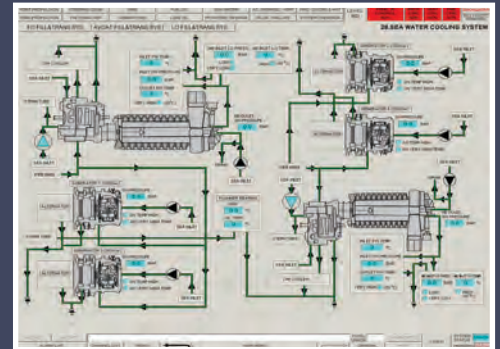


## IPMS - Integrated Platform Management System

Servowatch provides a range of turn key solutions suitable for vessels of any size and type, encompassing all aspects of platform management. The systems scalable architecture is designed to meet the full range of vessel requirements, from simple to complex environments.

### IPMS Features:

- Redundant operator workstations running Servowatch WINMON
- Multi-level redundant networking including fibre optics
- Remote Data Collection and Control Units
- Integrated Propulsion Control System (PCS)
- Integrated Automatic Power Management System (APMS)
- Integrated On Board Training Simulation (OBTS)
- Battle Damage Control System (BDCS)
- Equipment Health Monitoring and Dynamic Analysis



## INBS - Integrated Navigational Bridge System

With the capability to distribute all ship control data on dual redundant networks, the operator will be provided with the best information and decision support system available with hardware built in to custom designed consoles.

### INBS Features:

- Navigation Control including Route Planning
- Monitoring and Execution, Radar and ECDIS
- Navigation Sensors and Instruments
- External and Internal Communications
- Ship Information Broadcast and Entertainment Management
- Emergency and Ship Safety Information
- CCTV and Security Monitoring
- Alarm, Monitoring and Automation Control
- Propulsion Control (CPP, fixed shaft, azipod, joystick & dynamic positioning)
- Cargo Monitoring and Stability Computing
- Data Interface to Ship Management Software Package



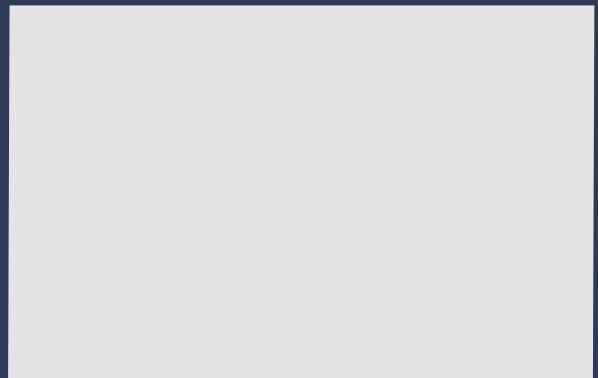
## A Global Presence

For detail of our global representation please contact our head office:

Servowatch Systems Ltd  
Endeavour House  
Holloway Road  
Heybridge, Maldon  
Essex  
CM9 4ER  
United Kingdom

Tel: +44(0)1621 855562  
Fax: +44(0)1621 851521  
E-Mail: [sales@servowatch.com](mailto:sales@servowatch.com)  
Web: [www.servowatch.com](http://www.servowatch.com)

## Authorised Representative



Servowatch Systems Ltd is a company registered in England and Wales, Registered No: 2159287. VAT No: GB 529 390 525  
Registered office: Endeavour House, Holloway Road, Heybridge, Maldon, Essex, CM9 4ER, United Kingdom